



4 Wharfdale Square, Tovil, Maidstone, ME15 6AU

VIRTUAL TOUR AVAILABLE. GUIDE PRICE £220,000 - £230,000. CHAIN FREE.

MMS Sale are completely impressed by this stunning spit level maisonette in Maidstone. You really are getting so much for your money with what's on offer and internal viewings are highly recommended.

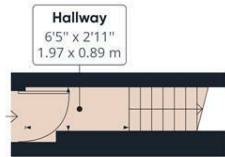
Upon entering via a flight of stairs that take you to the first floor accommodation, where you are immediately hit by the light flooding into the property. A lovely size lounge situated to the rear has two large windows for the extra light. The modern kitchen comes complete with high gloss units and complimenting splash back and tiled floor. The second bedroom can also be found on this level and then there's the added benefit of a handy separate wc. On the second floor is where you will find a beautiful master bedroom and access to the bigger than average bathroom with a convenient utility area which has plumbing for the washing machine. Externally there is a private front garden which is mostly lawn with established plants and flowers. There is also a carport with allocated parking for one car, plus one visitors parking space in the complex.

Tovil is a civil parish in the Borough of Maidstone, in Kent with many amenities within close proximity including schools, the train station and Maidstone town centre. Council tax band C. 106 years remaining on the lease. £200 ground rent per annum and £1200 service charge per annum.

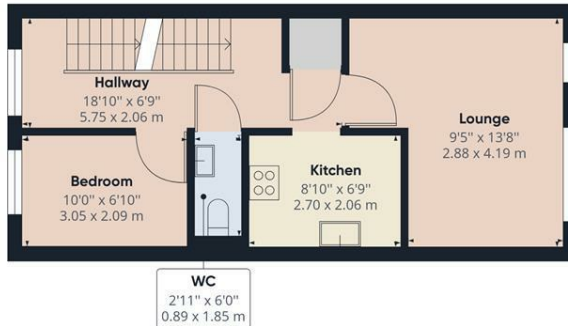
Call us today to book your internal viewing

- COUNCIL TAX BAND C
- GOOD SIZE ACCOMMODATION THROUGHOUT
- 1 PARKING SPACE PLUS 1 VISITORS PARKING SPACE
- EPC RATED C
- MODERN DECOR
- CHAIN FREE
- GUIDE PRICE £220K-£230K
- PRIVATE FRONT GARDEN
- VIEWING ADVISED

£220,000



Ground Floor



Floor 1



Floor 2

Approximate total area⁽¹⁾
824.60 ft²
76.61 m²

(1) Excluding balconies and terraces

While every attempt has been made to ensure accuracy, all measurements are approximate, not to scale. This floor plan is for illustrative purposes only.

GIRAFFE360

